

GRP-End Cover

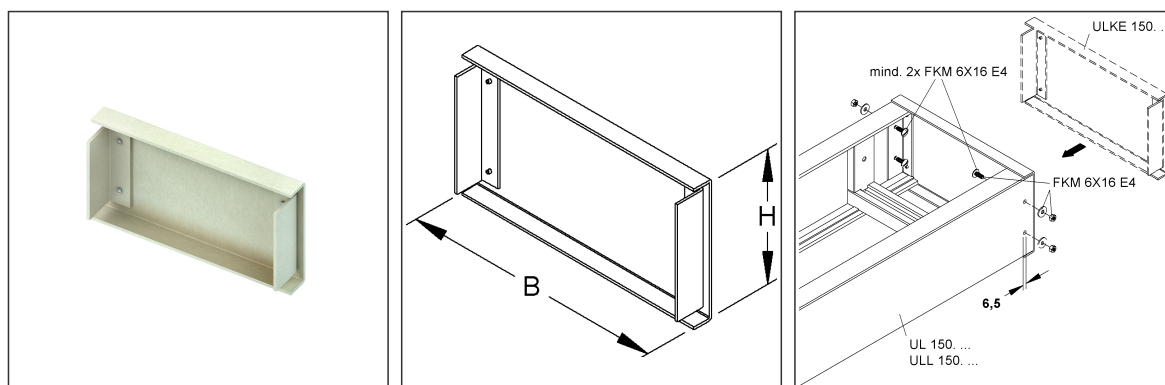
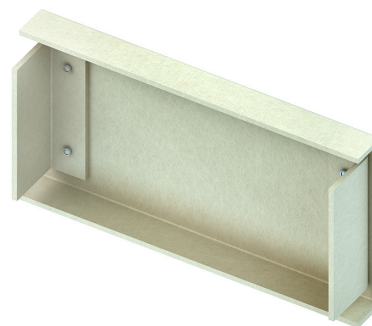
pressed

ULKE 150.500

EAN Code: 4013339965687

Smallest packaging unit: 1 pc.

the photorealistic images are to be considered as reference images



Article Description

GRP-end cover for UL, 150x500 mm, glass fiber reinforced polyester, pressed, RAL 7032, pebble grey

Excl. Accessories

exclusive bolting Required fixing accessories min. 2 pieces FKM 6X16 E4 (please order separately).

Additional Price Information

Article group	N15
quantity unit	pcs.

Weight

Weight per quantity unit	443 g / pcs.
Weight in kg per 100	44 kg / 100pcs.

Technical Datasheet

Cable Ladder System

ULKE 150.500

the photorealistic images are to be considered as reference images

Physical Article Dimensions

Height	156.00 mm
Width	499 mm
Depth/length	35.00 mm

Packing Dimension

1 piece = 1 piece		✓ VP1-smallest packaging unit (PU)			
Lenght	35.00 mm	Width	499 mm	Height	156.00 mm
Gross weight	0,44 kg	Volume	0,003 m³		
Min. quantity	1.00 pcs.	Max. Quantity	1.00 pcs.		

Tender Text

GRP end cover, pressed, for covering the GRP cable ladder ends, proportional fastening accessories at least 2 FKM 6X16 E4 to be ordered separately, halogen-free.

for GRP cable ladder : UL 150...

ULL 150...

Dimensions (approx. dimensions) H x W : 150 x 500 mm

Material : UP-GF (glass fibre reinforced polyester)

Colour : pebble grey RAL : 7032 (similar)

NIEDAX Model-No. : ULKE 150.500

EP Material_____ EP Wage_____

Unit price/piece

Safety & Environment

REACH Date	27.06.2024
REACH Info	Conformable
RoHS Info	Conformable

Origin & International Trade

Country of origin	FR
Customs tariff number	39259020