

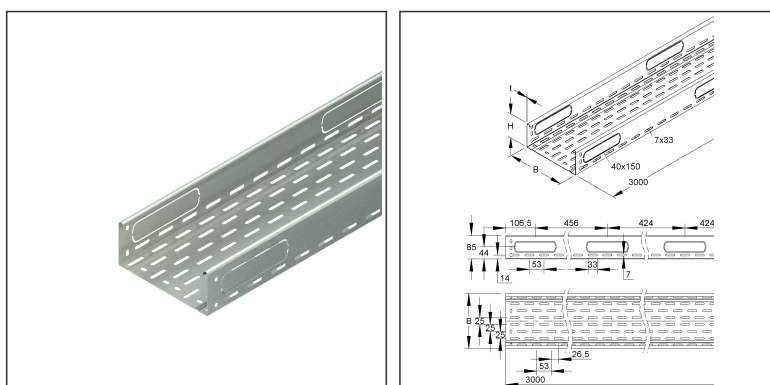
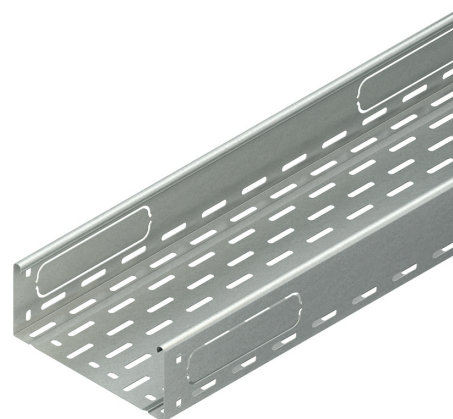
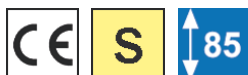
### Distribution Tray

perforated, splice plate not included

### RLCPV 85.200 OV

EAN Code: 4013339031627  
 Smallest packaging unit: 2 x 3 m  
 quantity unit: m M

the photorealistic images are to be considered as reference images



### Article Description

Distribution tray, 85x200x3000 mm, perforated, steel, pre-galvanised according to DIN EN 10346, without connector

### Additional Price Information

Article group	N13
quantity unit	m

### Weight

Weight per quantity unit	2,762 kg / m
Weight in kg per 100	276 kg / 100m

# Technical Datasheet

## Cable Tray System

RLCPV 85.200 OV

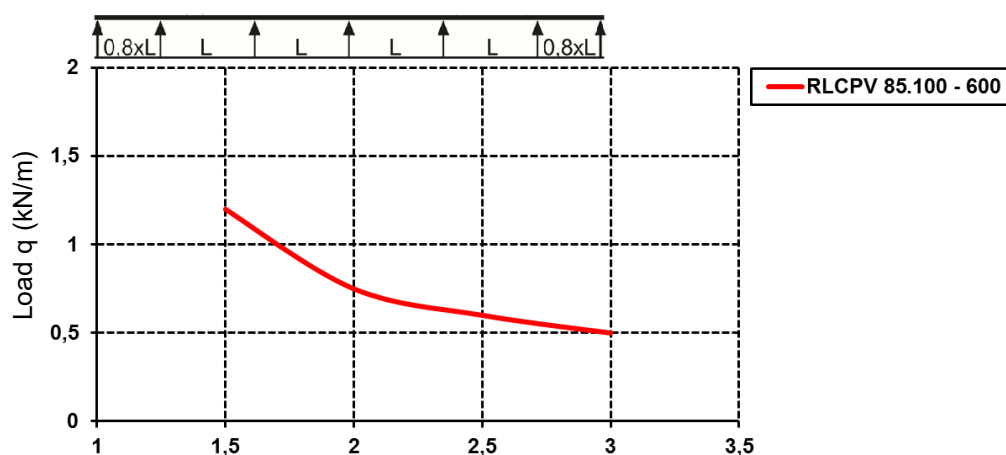
the photorealistic images are to be considered as reference images

### Physical Article Dimensions

Height	85.00 mm
Width	200.00 mm
Depth/length	3000 mm

### Load Specifications

Load diagram:  $q$  = evenly distributed cable load (tested acc. to DIN IEC 61537)



Fixing distance (m)

The load details shown in the diagram are independent of the position of the connectors.

### Packing Dimension

**6 meters = 1 bundle** ✓ VP1-smallest packaging unit ( PU) ✓ VP1-preferred PU

Gross weight 17 kg

Min. quantity 6.00 m

Max. Quantity 6.00 m

**240 meters = 1 rack**

Length 3000 mm

Width 1162 mm

Height 1120 mm

Gross weight 761 kg

Volume 3,904 m<sup>3</sup>

Min. Quantity 240.00 m

Max. Quantity 240.00 m

### Tender Text

Distribution tray, acc. to DIN EN 61537, with offset bottom and side perforations for continuous fastening and attachment of the system components, continuous corrugations in the bottom ensure a quick positive-locking longitudinal connection by locking the screwless connectors RVC 85 with the side holms, side outlets are provided for cable and line feed-through, please order screwless splice plate RVC 85... separately

Dimensions (approx. dimensions)

Height H x width W : 85 x 200 mm

Material thickness : 1 mm

Side outlets : 40 x 150 mm

Delivery length : 3000 mm

Usable cross section : 16800 mm<sup>2</sup>

Material : Steel, pre-galvanised to DIN EN 10346

NIEDAX Model No. : RLCPV 85.200 OV

# Technical Datasheet

## Cable Tray System

RLCPV 85.200 OV

the photorealistic images are to be considered as reference images

### Tender Text

EP Material \_\_\_\_\_ EP Wage \_\_\_\_\_  
Unit price/meter

### Safety & Environment

REACH Date	04.02.2026
REACH Info	Conformable
RoHS Info	Conformable

### Origin & International Trade

Country of origin	DE
Customs tariff number	73089059

### Related items

#### Cover

Model No.	Description
RD 200	Cover for cable tray/-ladder, with joint strip, 202x3000 mm, steel, pre-galvanised according to DIN EN 10346
RDHF 9 E2	Cover clamp, stainless steel, material code: 1.4310
RDRS 9	Turning bolt with locking nut acc. to DIN EN ISO 10511, steel, pre-galvanised according to DIN EN 10346, incl. accessories
RDV 200	Cover for cable tray/-ladder, with joint strip, 202x3000 mm, steel, pre-galvanised according to DIN EN 10346

#### Barrier strip

Model No.	Description
RW 85	Barrier strip, 80x3000 mm, t=0,9 mm, steel, pre-galvanised according to DIN EN 10346, incl. accessories

#### Connector

Model No.	Description
RVC 85	Splice plate, screwless, height 85 mm, steel, pre-galvanised according to DIN EN 10346